

PRE -



# Development of an Atlas on Animal Migration

CMS COP12 Regional Preparatory Workshop for Asia

Christiane Roettger  
Associate Programme Officer,  
UN Environment / CMS Secretariat  
15-17 August 2017  
Bonn, Germany



# Mapping Species Distribution and Infrastructure

- Barriers to migration/ rapid development of linear infrastructure construction in Central Asia addressed as major threat under CMS since 2011 (workshops, studies, guidelines, conservation projects, etc.)
- Priority setting workshop (Aug 2016) for the Central Asian Mammals Initiative (CAMI) developed 2 project proposals on this issue
- Objective: to map the distribution and movement corridors of migratory mammals in combination with threats from linear infrastructure, such as railways, roads, pipelines, and border fences, across ten Central Asian countries (workshop in April 2017)



Contents

- CAMI infrastructure - canal
- CAMI infrastructure - fence
- CAMI infrastructure - pipeline
- CAMI infrastructure - railroad
- CAMI infrastructure - road
- CAMI conflict - canal conflict
- CAMI conflict - fence conflict
- CAMI conflict - railroad conflict
- CAMI conflict - road conflict
- CAMI species - *Acinonyx jubatus venaticus* corridor
- CAMI species - *Acinonyx jubatus venaticus* range
- CAMI species - *Camelus bactrianus* corridor
- CAMI species - *Camelus bactrianus* range
- CAMI species - *Cervus hanglu bactrianus* corridor
- CAMI species - *Cervus hanglu bactrianus* range
- CAMI species - *Equus hemionus* corridor
- CAMI species - *Equus hemionus* range



# CAMI Data Management

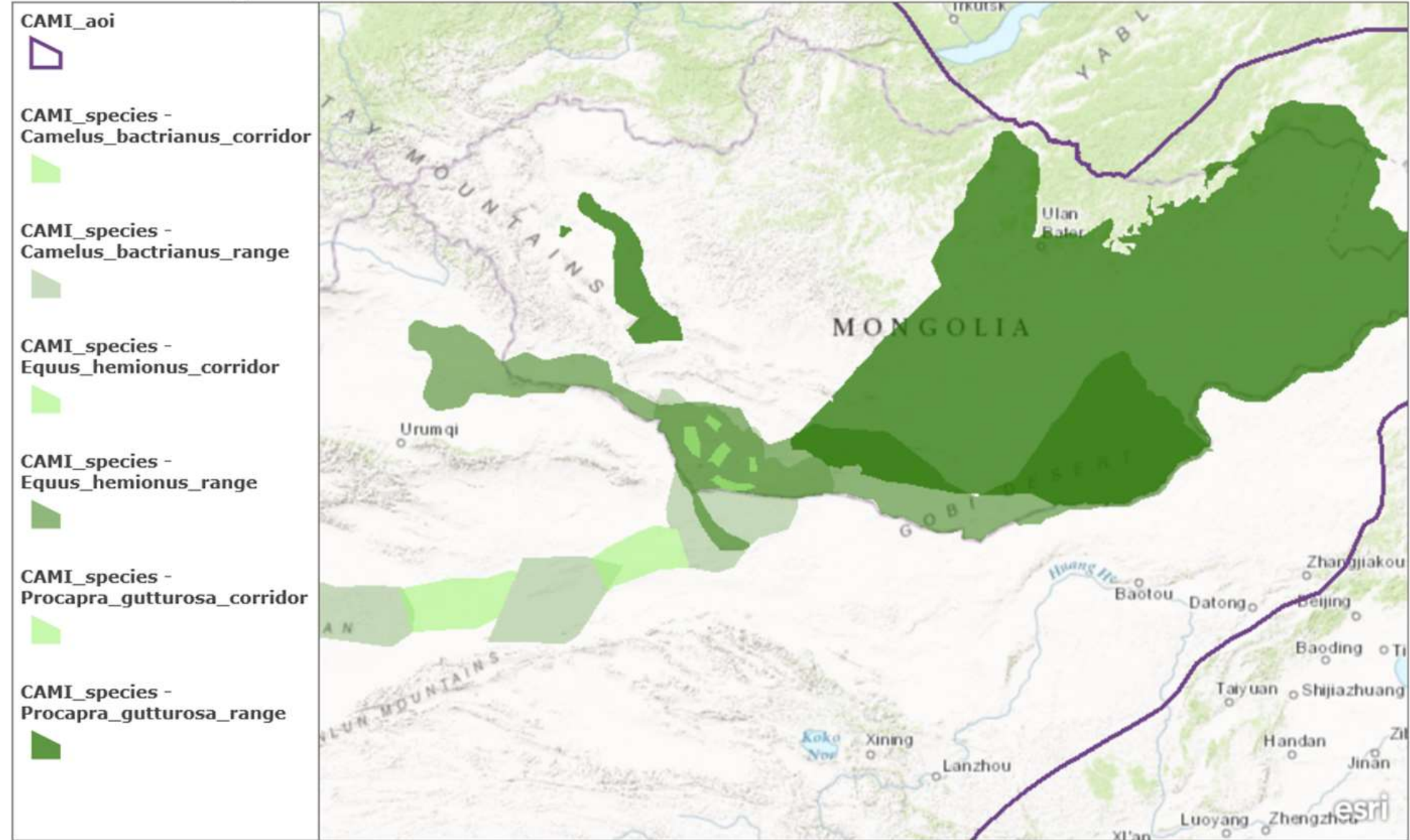


CAMI Data Management





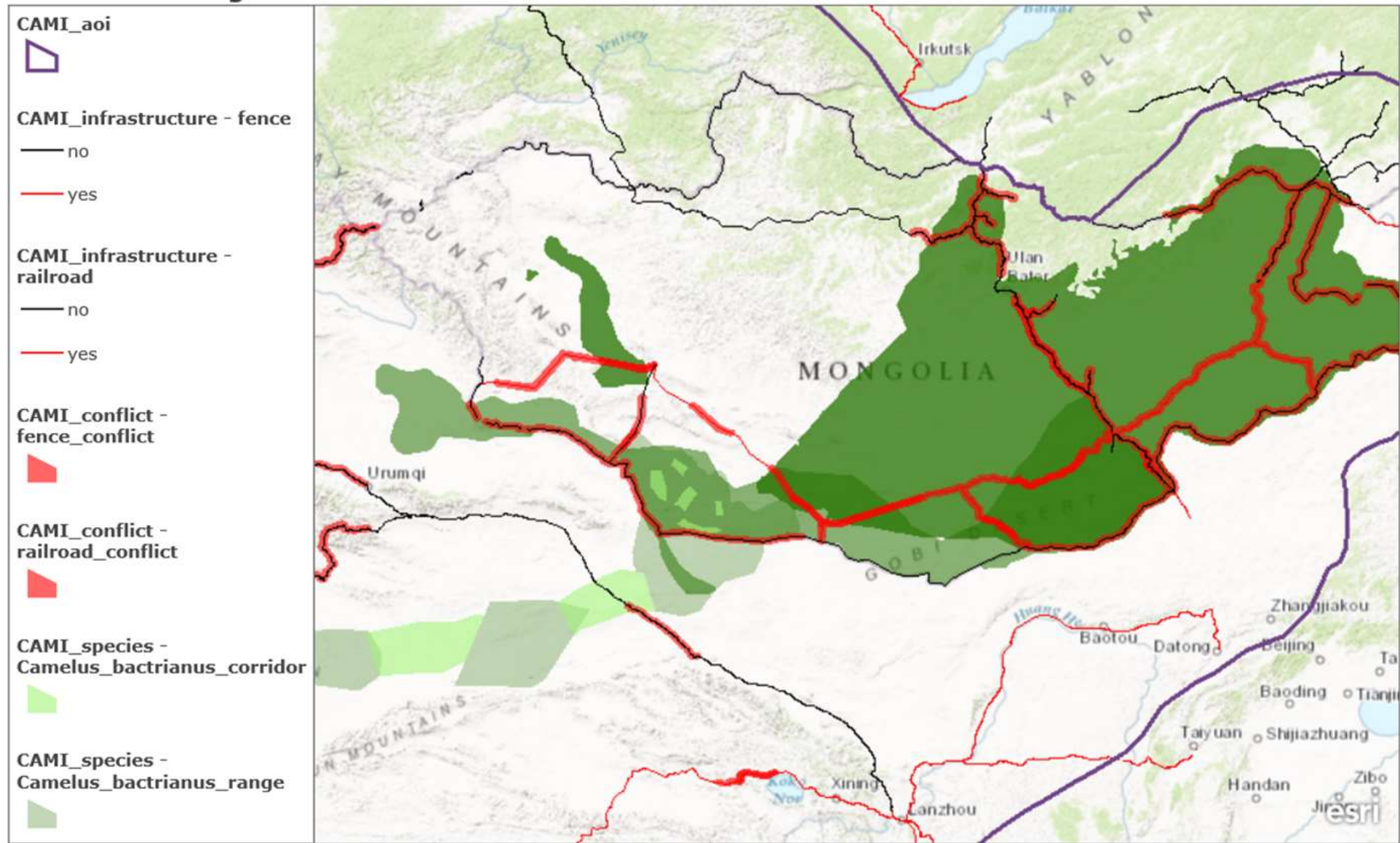
# CAMI Data Management



CAMI Data Management



# CAMI Data Management



CAMI Data Management



# Acknowledgements and next steps

- Grateful for generous long-term funding provided by German Government to sustainably address the issue
- Grateful for generous funding from the Swiss Government for this and other projects
- Expertise provided by the Wildlife Conservation Society (WCS) in developing the atlas

## Next steps:

- Further development into a website/online interactive tool to facilitate easier access and usability by the general public, scientists and decision makers





# Thank you for your attention!

Follow us!



@bonnconvention  
#CMSCOP12



@bonnconvention

