

# Monitoring Guidelines

Samantha Nicholson (samanthan@ewt.org.za)





# Standardizing methods to surveying lions and their prey

- Growing debate in the scientific literature around the validity and accuracy of some of the common methods used to survey lions.
- The concern being that inappropriate survey methods are used to generate sometimes unreliable information
- Problematic as these are used to guide conservation action and management decisions

- Reliable monitoring of the distribution, size and trends in lion and prey pops is key for effective management
- Workshop in April 2021 – bringing together ~30 lion and prey experts
- Intention of developing guidelines for standardizing survey methods to answer three key questions:

- 1) **How many** lions and how large are prey populations?
- 2) What are the **trends** in lion/prey populations?
- 3) **Where** are lions and their prey distributed?



# The manual & the ACI

Objective:

## Objective 11: Knowledge and information

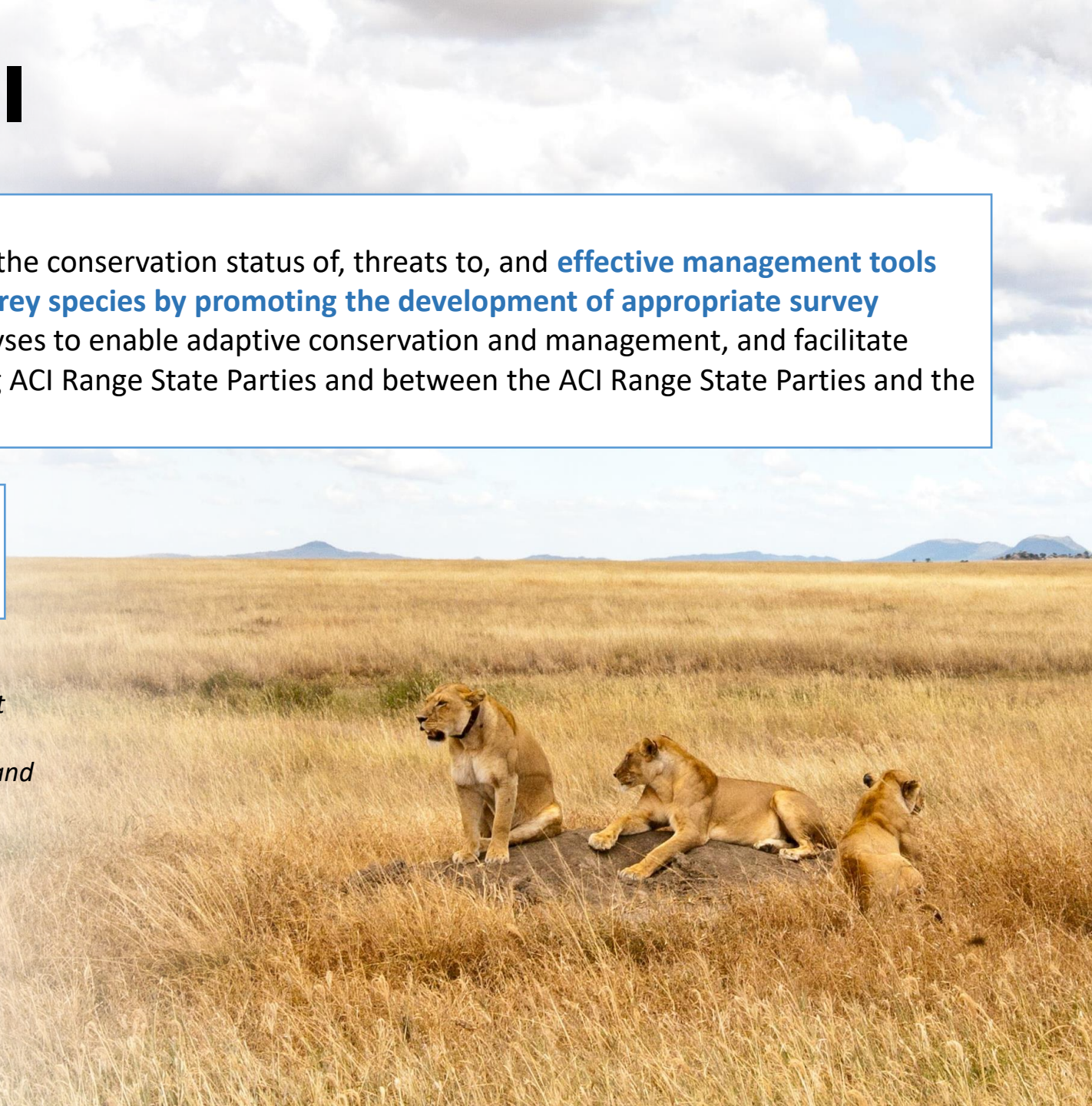
To continually increase the knowledge base on the conservation status of, threats to, and **effective management tools for the ACI species and their most important prey species by promoting the development of appropriate survey methods**, coordinated data collection and analyses to enable adaptive conservation and management, and facilitate communication and information sharing among ACI Range State Parties and between the ACI Range State Parties and the local, national and international communities.

Results:

**Result 11.1:** Standards for survey and monitoring of the ACI species and their most important prey species are established.

Indicators:

- 1) *Monitoring guidelines for ACI species & their most important prey are available,*
- 2) *Monitoring has been performed in the key areas and according to the guidelines*
- 3) *Monitoring networks are established.*





- Large project with ~30 authors across the 8 chapters
- Details the most reliable methods to achieve the answers to those three key questions
- Includes a decision-making tool
- The manual itself is currently being finalized
- Distributed within the next few months





Samantha Nicholson  
samanthan@ewt.org.za

